

NETWORK CAMERA

# GuardianShield Bullet +

AI Camera Series

## TS AUTOMATIC NUMBER PLATE RECOGNITION (ANPR) CAMERA

Introducing the TECHNO SUPPORT Guardianshield Bullet Plus ANPR CCTV camera its utilizes advanced automatic number plate recognition technology to capture and analyze vehicle license plates in real-time, enhancing security and traffic management. It provides high-resolution imagery, fast processing, and reliable data integration for comprehensive monitoring.

**Model : TSCINPCS3075BBMI3I655**



LICENSE PLATE  
CAPTURE



IP 67

## Main Feature

- **High-Resolution Imaging:** Captures clear images of license plates, even in low light or adverse weather conditions at 60 Hz: 2688 × 1520 @ 30 fps.
- **Real-Time Processing:** Quickly identifies and processes license plates in real-time.
- **Wide Dynamic Range:** Handles high-contrast scenes, ensuring plate readability 140 dB WDR.
- **Infrared Illumination:** Enhances visibility and accuracy in low-light environments IR range up to 100 m.
- **Vehicle Speed Detection:** Monitors and records vehicle speed for traffic management.
- **Multi-Lane Coverage:** Supports monitoring multiple lanes simultaneously.
- **Data Integration:** Seamlessly integrates with databases and management systems for efficient data handling.
- **Robust Design:** Weatherproof and durable for outdoor installations IP67, IK10.
- **Alert System:** Triggers alerts for unauthorized or blacklisted vehicles.
- **Easy Installation:** Simplified setup and configuration for quick deployment. Support mobile phone remote monitoring (iOS, android), support computer remote monitoring .



## HIGHLIGHTS

### Superiority

- Dedicated camera for ANPR
- HD resolution
- Integrated IR
- Professional shutter speed control
- Built-in ANPR engine, equipped with AI algorithm



### Applications



Urban Road



Entrance & Exit



Highway Toll

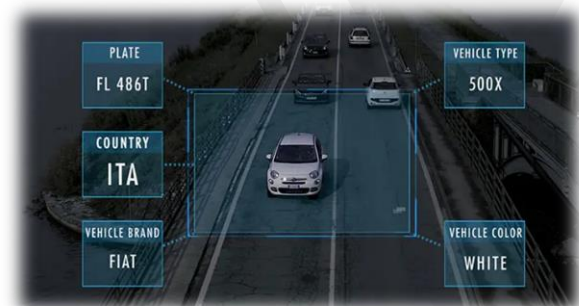


Mixed Road

- Vehicle control
- Traffic monitoring
- Toll collection
- Security

### Smart Function

- Support vehicle type classification
- Support vehicle colour identification
- Support no-plate vehicle capture
- Supports Speed measurement by video
- Support driving direction detection
- Support motorcycle capture





## SPECIFICATION

### CAMERA

Model No	TSCINPCS3075BBMI3I655
Image Sensor	1/1.8" progressive scan CMOS
Min. Illumination	Color: 0.001 Lux @ (F1.2, AGC ON), 0.0005 Lux with IR
Shutter Speed	1/25 s to 1/100,000 s
Slow Shutter	Supported
White balance	Support auto white balance
Wide dynamic	Support digital
D-WDR	Support D-WDR
IR Led Control	IR, auto/manual/off, support 0-100 brightness adjust
Digital Noise Reduction	3D DNR
3D DNR	Off/Low/Middle/High/Higher
Defog	Off/Low/Middle/High
Mirror	Off/horizontal mirror/vertical mirror/180° flip

### Lens

Focal Length	8-32 mm
Aperture	F1.63-1.8
Focus	Auto
Auto-iris	DC drive
FOV	Horizontal FOV: 39.7° to 15.9°; Vertical FOV: 22.3° to 9.1°; Diagonal FOV: 45.8° to 18.1°
IR View Range of Camera	Up to 100 m
Wavelength	850 nm

### AUDIO AND VIDEO ENCODING

Max. Resolution	2688 × 1520
Mainstream	50 Hz: 25 fps (2688 × 1520, 1920 × 1080, 1280 × 720, 704 × 576, 352 × 288) 60 Hz: 30 fps (2688 × 1520, 1920 × 1080, 1280 × 720, 704 × 576, 352 × 288)
Sub Stream	50 Hz: 25 fps (1920 × 1080, 1280 × 720, 704 × 576, 352 × 288) 60 Hz: 30 fps (1920 × 1080, 1280 × 720, 704 × 576, 352 × 288)
Framerate	50 Hz: 25 fps (1280 × 720, 704 × 576, 352 × 288) 60 Hz: 30 fps (1280 × 720, 704 × 480, 640 × 480)
Video adjustment	Rotation mode, saturation, brightness, contrast, sharpness, AGC, and white balance are adjustable via client software or web browser.
Video Compression	H.264 and H.265 encoding

Video Code Rate	Fixed code rate, variable code rate (main stream:160Kbps-4000kbps)
Day/Night Switch	Auto/Scheduled/Triggered by alarm in
Audio	Supported
Bit Rate Control	CBR/VBR
<b>NETWORK</b>	
Network protocol	TCP/IP, UDP, DHCP, NTP, RTSP, PPPoE, DDNS, SMTP, FTP, UPnP, Unicast, Multicast, ICMP, HTTP, HTTPS, DNS, DDNS, RTP, RTCP, IGMP, 802.1X, QoS, Ipv4, Ipv6
Access protocol	Support ONVIF/private protocol/CGI
Security Mode	HTTPS / IP Filter / IEEE 802.1X / Blacklist & whitelist / account security / serial password protection, HTTPS encryption, digest authentication for HTTP/HTTPS, digest authentication for ONVIF
Max users	Up to 32 users 3 user levels: administrator, operator, and user
Motion Detection	Set detection area, can set multi-level sensitivity
Privacy Mask Alarm	Password protection, complicated password, HTTPS encryption, IP address filter, Security Audit Log, basic and digest authentication for HTTP/HTTPS, TLS 1.2, WSSE and digest authentication for ONVIF
Privacy Mask	Support 4 areas
Schedule Linkage	Snapshot, email
Device Abnormal Inspection	Support network broken alarm, IP conflict alarm, illegal visiting alarm
Network Storage	microSD/TF card (128 GB), local storage and CVR, NVR, ANR
Client	VMS, Android, IOS, Windows
Web Browser	Plug-in required live view: IE8+, Chrome 41.0-44, Firefox 30.0-51, Safari 8.0-11 Plug-in free live view: Chrome 57.0+, Firefox 52.0+
<b>INTELLIGENT</b>	
Recognition	License Plate Recognition
Smart Function	Vehicle type classification, color identification, no-plate vehicle capture, vehicle driving direction detection
Accuracy (Under recommended installation and lighting conditions)	Capture rate > 98% Driving direction recognition accuracy > 98.5% LPR accuracy > 98% Mistaken capture rate < 2%
No License Plate Detection	Yes
Motorcycle LPR	Yes
Vehicle Type	Car/Van/Bus/Truck/Others
Vehicle Color	Red, yellow(including orange), green, blue, purple, brown, white, grey(including silver), black IR Model: Recognizable at daytime only



Capture Speed Range	Up to 120km/h	
<b>INTERFACE</b>		
Communication Interface	1 RJ45 10M/100M/1000M Ethernet interface 1 RS-485 interface 1 Wiegand interface	
Alarm	1 input interface, 1 output interface, 2 relays	
Video Output	Network	
On-Board Storage	Built-in microSD/TF card, up to 128 GB	
Reset Button	Supported	
<b>GENERAL</b>		
Storage Conditions	-30 °C to 70 °C (-22 °F to 158 °F). Humidity 95% or less (non-condensing)	
Operating System	Linux	
Startup and Operating Conditions	-30 °C to 70 °C (-22 °F to 158 °F). Humidity 95% or less (non-condensing)	
Power Supply	12 VDC ± 25%, reverse polarity protection	
Power Consumption and Current	12 VDC, 0.9 A, max. 10.8 W	
Material	Aluminum alloy	
Software Reset	Yes	
Address	India	1. Techno Support AI-Ameen 2nd gate Opp, Ground, 13, Athani Road, Vijayapura, Karnataka, 586108 2. Techno Support, Polymer shapes , Railway Parallel Rd, 4th Block, Kumara Park West, Sampangiram Nagar, Bengaluru, Karnataka 560020 3. Techno support, Tilak Nagar, Krishna Park,old Mahavir Nagar, Galli no 8, beside Singh Gurudwara, Delhi -110018
	Taiwan	Taiwan - Techno Support, 8F., No.172, Sec. 2, Linghang N. Rd. Zhongli Dist., #124 Taoyuan City, 320014 Taiwan
<b>APPROVAL</b>		
EMC	FCC (FCC/23M02012); CE	
Safety	UL/23M02014; BIS IS 13252(PART 1):2010/ IEC 60950-1: 2005: IP67	
Environment	CE-ROHS, REACH	
Ingress Protection	Weather Proof IP67; IK10	
<b>WARRANTY</b>		
Product Warranty	5 Years	

**Please note :** That the camera's casing will be varies; however, all specifications will remain the same.